

Q65WRB **New**
Redundant type extension base unit
 Q12PRHCPU, Q25PRHCPU **Upgraded**
Redundant CPU

A new redundant system configuration is here capable of direct connection!

1. System configuration specific to the application

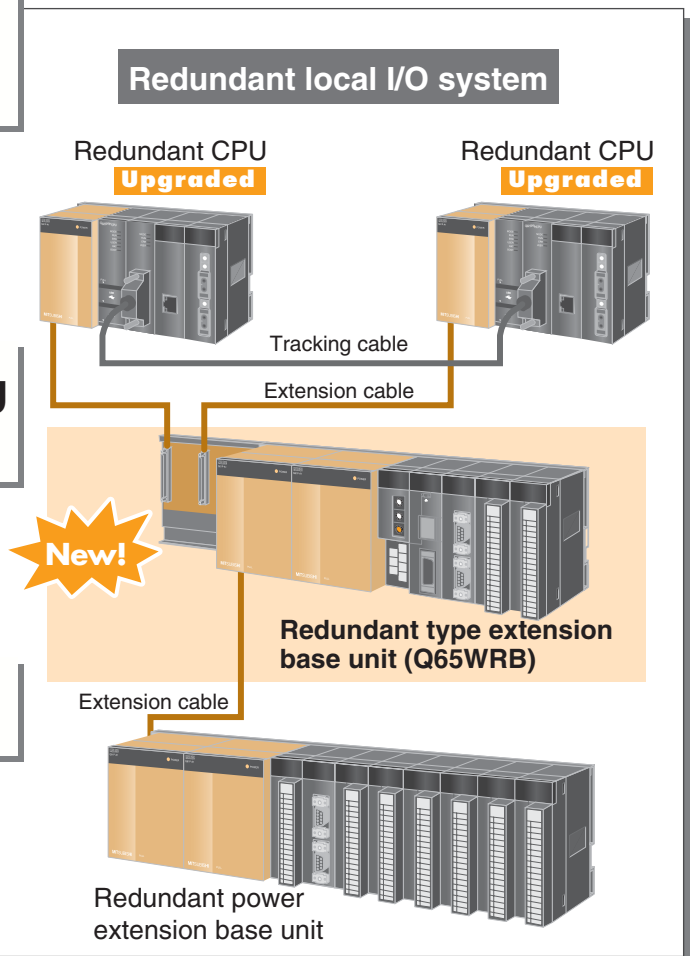
Redundant CPUs can be directly connected to the redundant type extension base unit. In addition to the redundant remote I/O system, the redundant local I/O system is available.

2. Ideal for systems requiring high-speed response

This system can use a direct bus connection greatly increasing I/O response speed together with redundant functionality.

3. Easy to maintain

Utilize standard Q Series modules, therefore reducing inventory and overall costs.

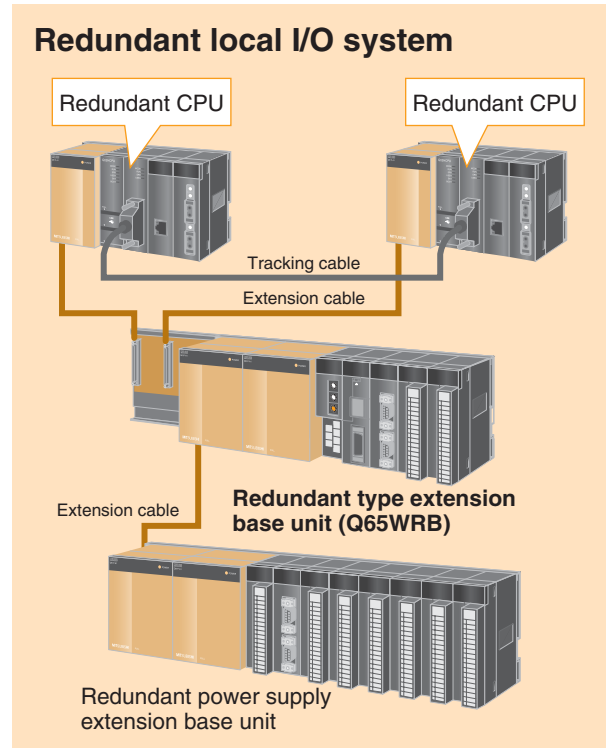
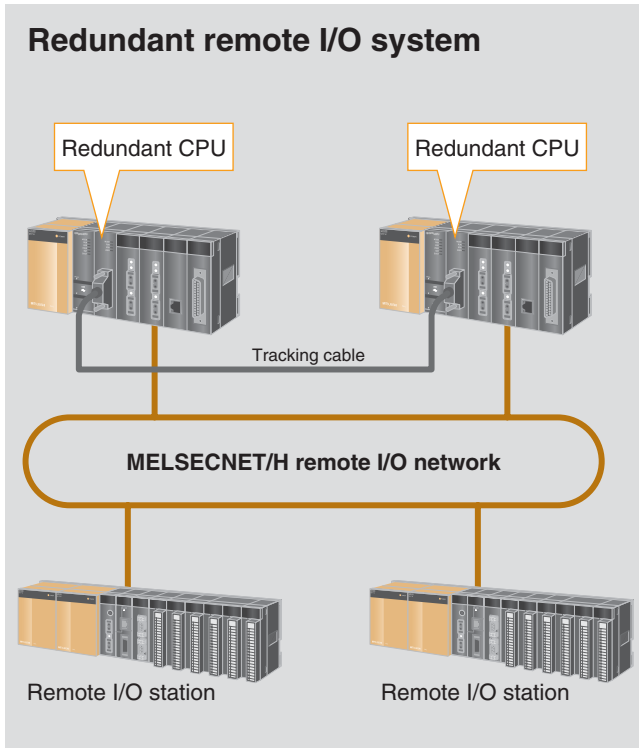


Mitsubishi Electric Corporation Nagoya Works is a factory certified for ISO14001 (standards for environmental management systems) and ISO9001 (standards for quality assurance management systems)



1. System configuration specific to the application

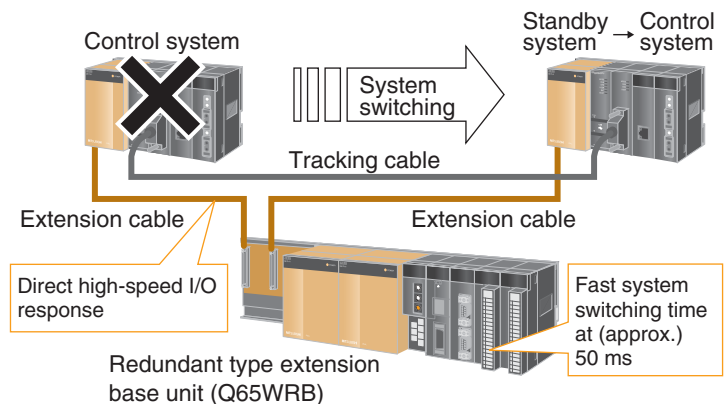
System can be configured for either remote or local I/O depending on application requirements.



2. Ideal for systems requiring high-speed response

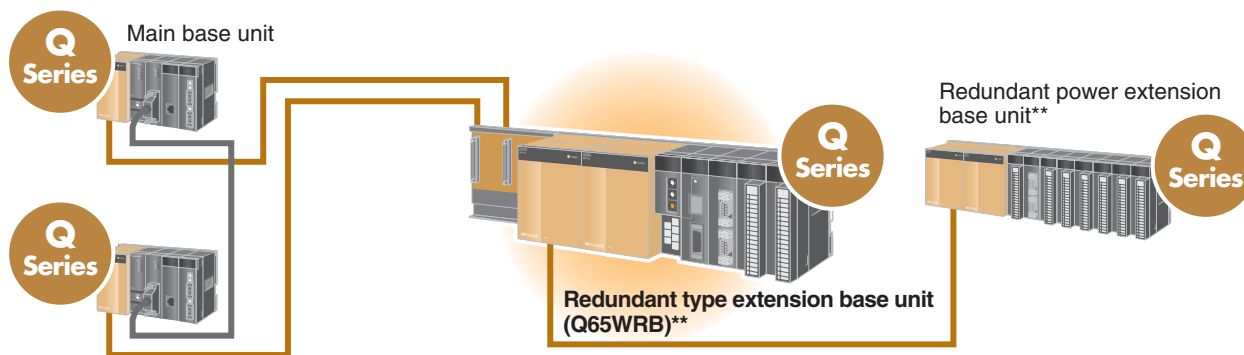
Increased I/O response and system switching speed

In the redundant local I/O system, the CPU can directly access I/O modules. I/O response is faster and the system switching time is reduced by 90% of the redundant remote I/O system. The redundant local I/O system is ideal when high-speed response is required.



3. Easy to maintain

Most of the standard Q Series modules* can be used. Hence, spare parts inventory and maintenance costs can be reduced.



Main base unit

* Please refer to the QnPRHCPU User's Manual (Redundant System) for details.

** When the redundant type extension base is used, CPU access from modules on the redundant type extension base unit using MELSOFT is limited.

Product combinations when Q65WRB is used

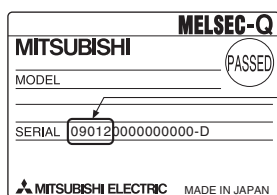
Redundant type extension base unit (Q65WRB) can be used in combination with the following products.

Product name	Serial No. or Version
Q12PRHCPU/Q25PRHCPU* Upgraded	First five digits of the serial number are 09012 or later
GX Developer	Ver.8.45X or later
PX Developer	Ver.1.14Q or later

* Used as a redundant CPU only.

•CPU serial No.

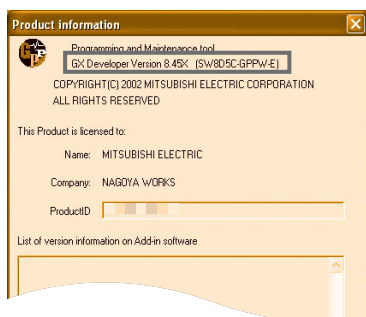
Indicated on the rated plate located on the CPU module's side face.



Serial No.
(First five digits)

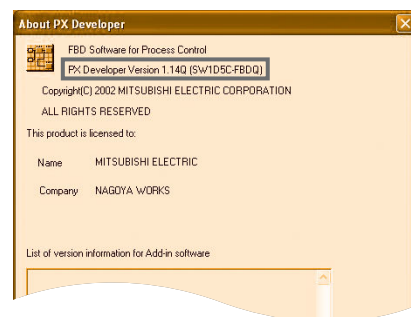
•GX Developer version information

Indicated on the product information under the GX Developer Help menu.



•PX Developer version information

Indicated on the product information under the PX Developer Help menu.



Specifications

Item	Q65WRB*1
Number of mountable I/O modules	5
Possibility of extension	Yes*2
Applicable module	Q Series modules
Mounting hole size	M4 screw hole or ø4.5 hole (for M4 screw)
Applicable power supply module	Q63RP, Q64RP*3
Internal current consumption (5 V DC)	0.16 A
Weight	0.52 kg

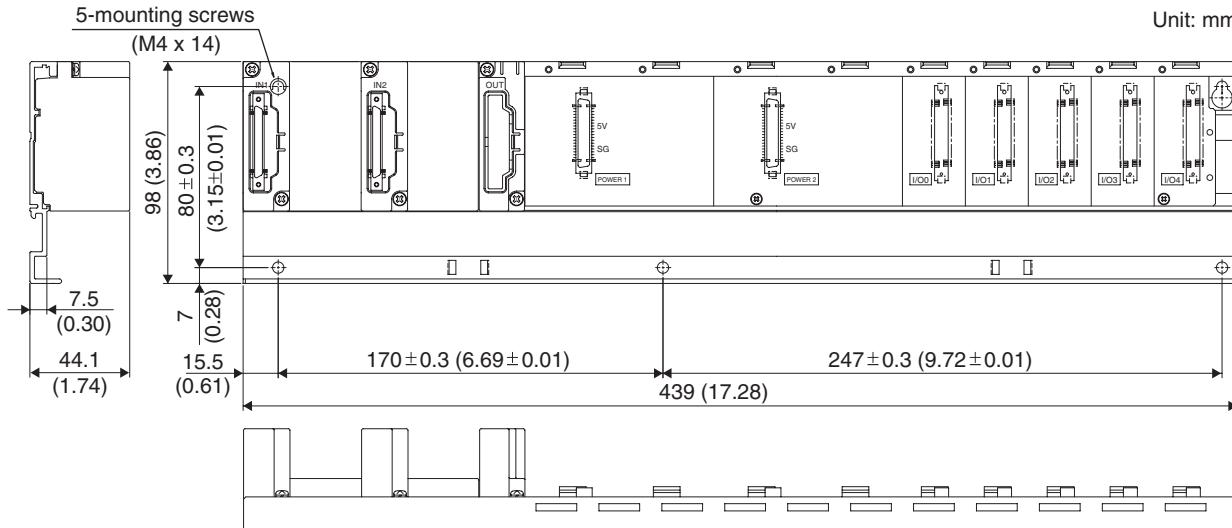
*1: Q65WRB can be installed at the first extension base stage only.

*2: Redundant power extension base unit (Q68RB) can be installed at the second to seventh extension base stage only.

*3: Q63RP and Q64RP can be installed together on Q65WRB and Q68RB.

External dimensions

Unit: mm (inch)



Product list

Product name	Model	Model code
Redundant type extension base unit	Q65WRB	1W4E39
Redundant CPU (Program capacity: 124 k steps, number of I/O points: 4096)	Q12PRHCPU	1W4A52
Redundant CPU (Program capacity: 252 k steps, number of I/O points: 4096)	Q25PRHCPU	1W4A53

Manuals

Manual name	Manual supply status	IB/SH No.	Model code
QCPU (Q mode) CPU Module User's Manual (Hardware)	Included	IB-0800061-V or later	13JL96
QCPU User's Manual (Hardware Design, Maintenance and Inspection)	Sold separately	SH-080483ENG-I or later	13JR73
QCPU User's Manual (Function Explanation, Program Fundamentals)	Sold separately	SH-080484ENG-H or later	13JR74
QnPRHCPU User's Manual (Redundant System)	Sold separately	SH-080486ENG-H or later	13JR76
QCPU (Q Mode)/QnACPU Programming Manual (Common Instructions)	Sold separately	SH-080039-L or later	13JF58

Country/Region	Sales office	Tel/Fax	Country/Region	Sales office	Tel/Fax
USA	Mitsubishi Electric Automation Inc. 500 Corporate Woods Parkway, Vernon Hills, IL 60061, USA	Tel: +1-847-478-2100 Fax: +1-847-478-0327	Taiwan	Setsuyo Enterprise Co., Ltd. 6F, No.105 Wu-Kung 3rd Rd, Wu-Ku Hsiang, Taipei Hsine, Taiwan	Tel: +886-2-2299-2499 Fax: +886-2-2299-2509
Brazil	MELCO-TEC Rep. Com.e Assessoria Tecnica Ltda. Rua Correia Dias, 184, Edificio Paraiso Trade Center-8 andar Paraiso, Sao Paulo, SP Brasil	Tel: +55-11-5908-8331 Fax: +55-11-5574-5296	Korea	Mitsubishi Electric Automation Korea Co., Ltd. 3F, 1480-6, Gayang-dong, Gangseo-gu, Seoul 157-200, Korea	Tel: +82-2-3660-9552 Fax: +82-2-3664-8372
Germany	Mitsubishi Electric Europe B.V. German Branch Gothaer Strasse 8, D-40880 Ratingen, Germany	Tel: +49-2102-486-0 Fax: +49-2102-486-1120	Singapore	Mitsubishi Electric Asia Pte. Ltd. 307 Alexandra Road #05-01/02, Mitsubishi Electric Building Singapore 159943	Tel: +65-6470-2460 Fax: +65-6476-7439
UK	Mitsubishi Electric Europe B.V. UK Branch Travellers Lane, Hatfield, Hertfordshire, AL10 8XB, UK	Tel: +44-1707-276100 Fax: +44-1707-278992	Thailand	Mitsubishi Electric Automation (Thailand) Co., Ltd. Bang-Chan Industrial Estate No.111, Soi Serithai 54, T. Kannayao, 10230 Thailand	Tel: +66-2-517-1326 Fax: +66-2-906-3239
Italy	Mitsubishi Electric Europe B.V. Italian Branch Viale Colleoni 7 1-20041 Agrate Brianza (Milano), Italy	Tel: +39-39-60531 Fax: +39-39-605312	Indonesia	P.T. Autoteknindo Sumber Makmur Muara Karang Selatan Block A/Utara No.1 Kav. No.11, Kawasan Industri/ Pergudangan, Jakarta - Utara 14440, P.O. Box 5045 Jakarta 11050, Indonesia	Tel: +62-21-663-0833 Fax: +62-21-663-0832
Spain	Mitsubishi Electric Europe B.V. Spanish Branch Carretera de Rubi 76-80 E-08190 Sant Cugat del Valles (Barcelona), Spain	Tel: +34-93-565-3131 Fax: +34-93-589-1579	India	Messung Systems Pvt., Ltd. Electronic Sadan NO: III Unit No.15, M.I.D.C. Bhosari, Pune-411026, India	Tel: +91-20-2712-3130 Fax: +91-20-2712-8108
France	Mitsubishi Electric Europe B.V. French Branch 25, Boulevard des Bouvets, F-92741 Nanterre Cedex, France	Tel: +33-1-5568-5568 Fax: +33-1-5568-5757	Australia	Mitsubishi Electric Australia Pty. Ltd. 348 Victoria Road, Rydalmere, NSW 2116, Australia	Tel: +61-2-9684-7777 Fax: +61-2-9684-7245
South Africa	Circuit Breaker Industries Ltd. Private Bag 2016, ZA-1600 Isando, South Africa	Tel: +27-11-928-2000 Fax: +27-11-392-2354			
Hong Kong	Mitsubishi Electric Automation (Hong Kong) Ltd. 10F, Manulife Tower, 169 Electric Road, North Point, Hong Kong	Tel: +852-2887-8870 Fax: +852-2887-7984			
China	Mitsubishi Electric Automation (Shanghai) Ltd. 4F Zhi Fu Plaza, No. 80 Xin Chang Road Shanghai 200003, China	Tel: +86-21-6120-0808 Fax: +86-21-6121-2444			

MITSUBISHI ELECTRIC CORPORATION

HEAD OFFICE: TOKYO BUILDING, 2-7-3 MARUNOUCHI, CHIYODA-KU, TOKYO 100-8310, JAPAN
NAGOYA WORKS: 1-14, YADAMINAMI 5, HIGASIKU, NAGOYA, JAPAN

0704 (MDOC)

Specifications subject to change without notice.
Printed in Japan on recycled paper.