

Mitsubishi Electric Programmable Controller

New Product Release

No. 332E

CC-Link IE



QJ71GF11-T2
CC-Link IE Field network master/local module

QnUDE(H)CPU
Built-in ethernet port QCPU

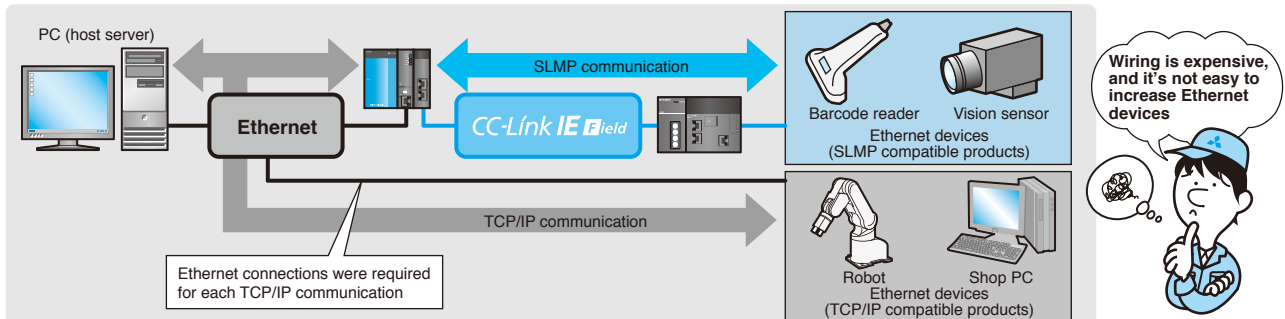
NZ2GF-ETB
CC-Link IE Field network Ethernet adapter module

Perform TCP/IP Communication with CC-Link IE Field Network!

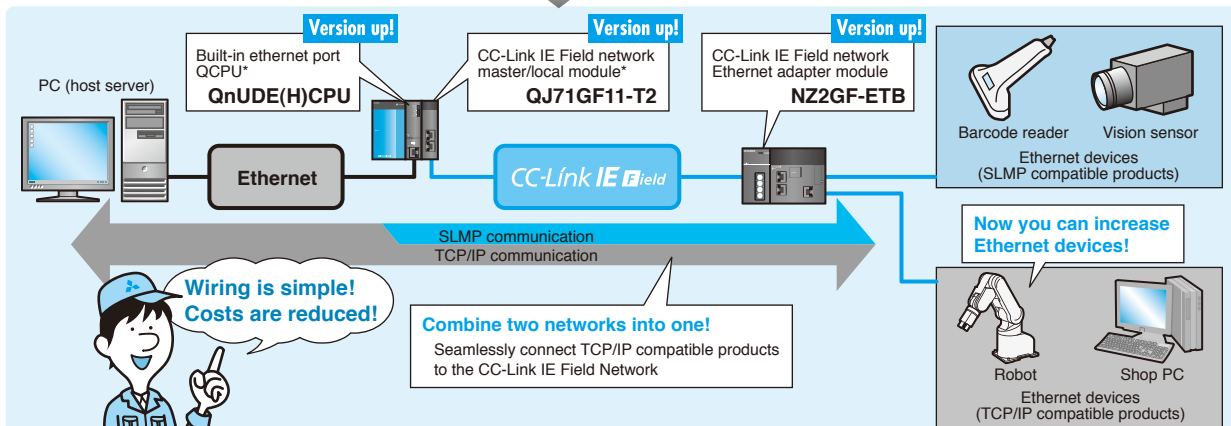
Strengthen network system's failure resistance with submaster function!

Point 1 Connect CC-Link IE Field Network and Ethernet devices seamlessly using IP packet transfer function!

Before...



Now!



* Use GX Works2 Ver. 1.77F or higher to set the parameters.

Point 2 Avoid system failures by adding a submaster station!

- A submaster station can be set in addition to the master station.
- Even if a failure occurs in the master station, the data link is continued by the submaster station.

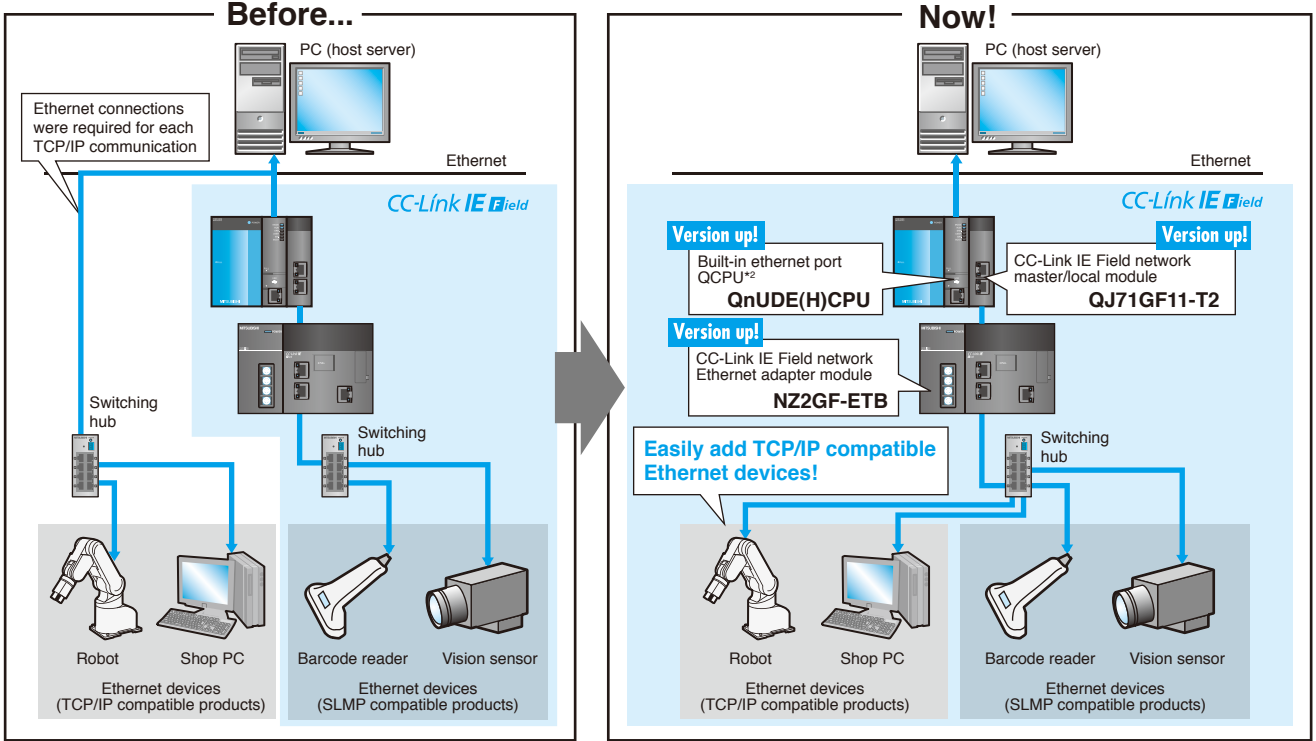
Point1

Connect CC-Link IE Field Network and Ethernet devices seamlessly using IP packet transfer function!



● Combine two networks into one!

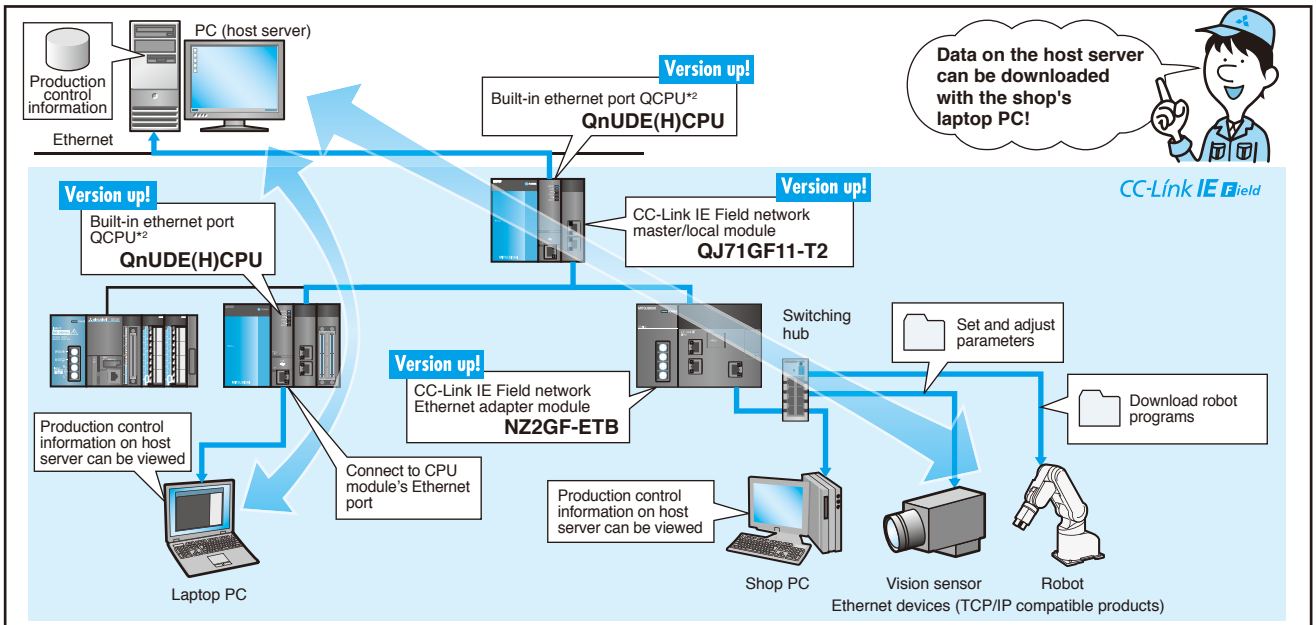
- Ethernet devices (TCP/IP compatible devices) can be seamlessly connected to the CC-Link IE Field Network.
- System construction costs can be reduced since there's no need to install Ethernet for TCP/IP communication.



● Use protocols including FTP and HTTP! *1

- Using the IP packet transfer function, TCP/IP communication can be established between a PC (host server) at a place away from the shop and the shop Ethernet device connected to the CC-Link IE Field Network. Since protocols such as FTP and HTTP can be used, programs can be sent to robots at the shop, and files on the host server can be read out with the shop's PC. Devices which set parameters with Web browsers are also supported.

*1 The communication speed may be slower than when communicating over an Ethernet line. Use with data capacities within 10MB is recommended.

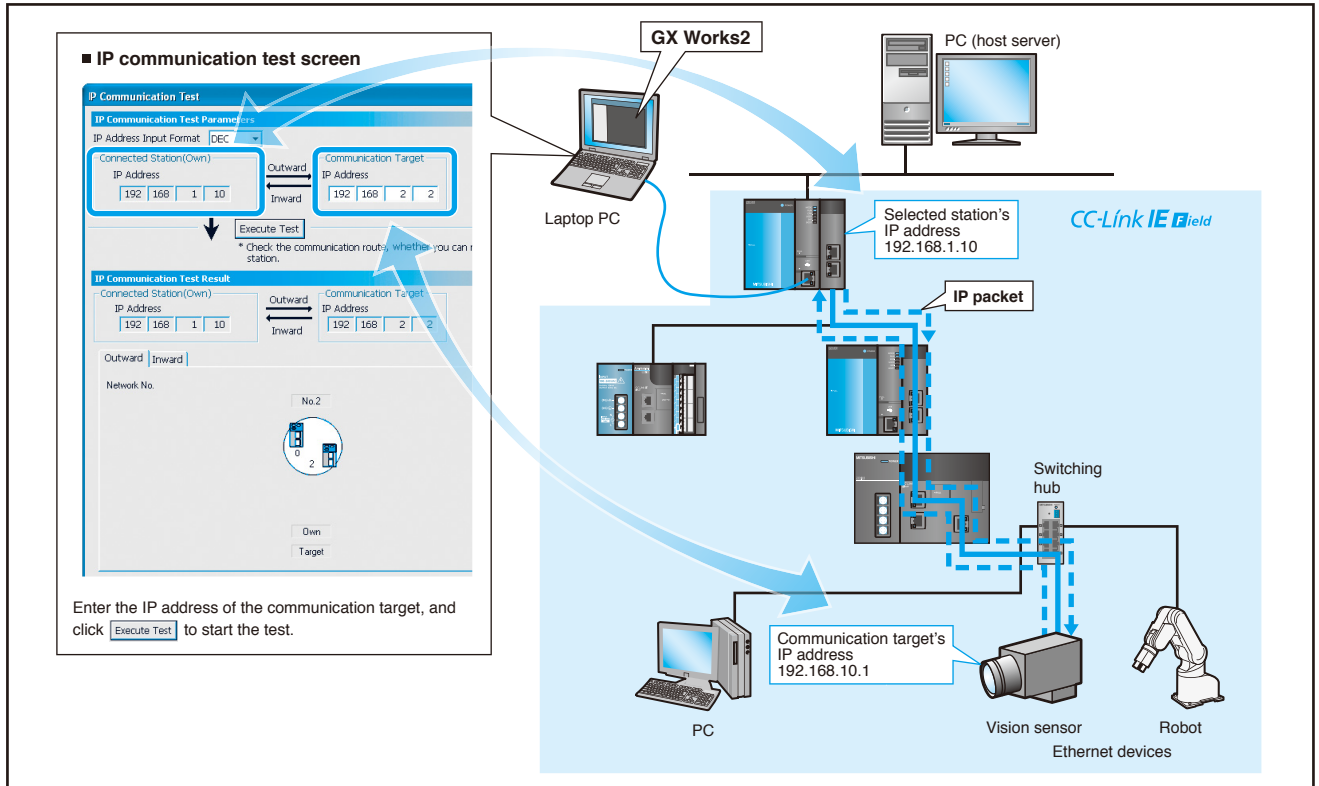


*2 The following QCPU modules with Built-in Ethernet ports support the IP packet transfer function.
 Q03UDECPU, Q04UDEHCPU, Q06UDEHCPU, Q10UDEHCPU, Q13UDEHCPU, Q20UDEHCPU, Q26UDEHCPU, Q50UDEHCPU, Q100UDEHCPU
 The following universal model QCPU modules can be used as relay stations.
 Q03UDCPU, Q04UDHCPU, Q06UDHCPU, Q10UDHCPU, Q13UDHCPU, Q20UDHCPU, Q26UDHCPU

● Easily test the IP packet transfer using GX Works2!

- Easily test whether the IP packet has arrived at the communication target Ethernet device by using the GX Works2 IP communication test.

* Refer to the manual for the module using the IP packet transfer function for details on what can be checked with the IP communication test.

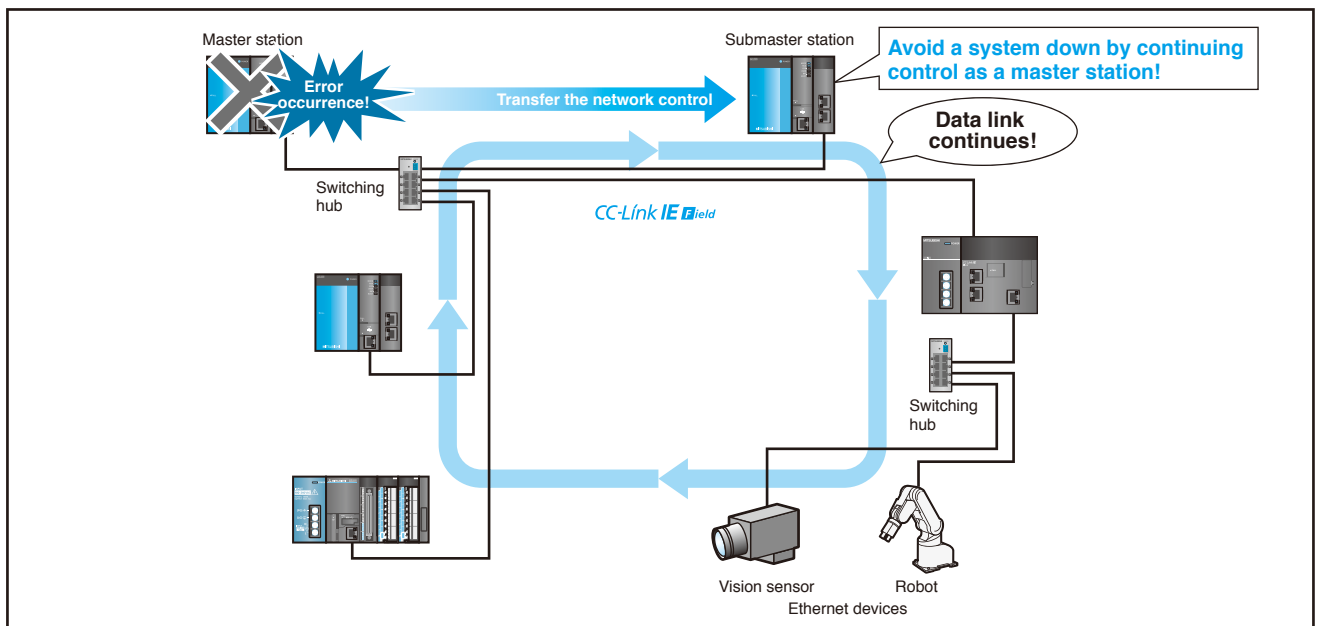


Point2 Avoid system failures by adding a submaster station!



● Set the submaster station!

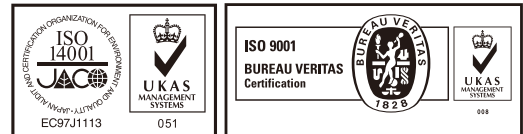
- A submaster station can be set in addition to the master station.
- Even if a failure occurs in the master station, the data link is continued by the submaster station.



Compliant version

Product name		Model	Compliant version
CC-Link IE Field network master/local module		QJ71GF11-T2	First five digits of the serial number are 14023 and the function version is B, or later
Universal model QCPU	Built-in ethernet port QCPU	Q03UDECPU	First five digits of the serial number are 14022 and the function version is B, or later
		Q04UDEHCPU	
		Q06UDEHCPU	
		Q10UDEHCPU	
		Q13UDEHCPU	
		Q20UDEHCPU	
		Q26UDEHCPU	
		Q50UDEHCPU	
		Q100UDEHCPU	
		Q03UDCPU	
		Q04UDHCPU	
		Q06UDHCPU	
		Q10UDHCPU	
Q13UDHCPU			
Q20UDHCPU			
Q26UDHCPU			
CC-Link IE Field network Ethernet adapter module		NZ2GF-ETB	First five digits of the serial number are 14022 and the function version is A, or later (Configuration tool version: 1.05F, or later)

Mitsubishi Electric Corporation Nagoya Works is a factory certified for ISO14001 (standards for environmental management systems) and ISO9001 (standards for quality assurance management systems)



Country/Region	Sales office	Tel/Fax	Country/Region	Sales office	Tel/Fax
USA	Mitsubishi Electric Automation Inc. 500 Corporate Woods Parkway Vernon Hills, IL 60061, USA	Tel : +1-847-478-2100 Fax: +1-847-478-2253	South Africa	Circuit Breaker Industries Ltd. 9 Derrick Road, Spartan, Gauteng PO Box 100, Kempton Park 1620, South Africa	Tel : +27-11-977-0770 Fax: +27-11-977-0761
Brazil	MELCO-TEC Rep. Com.e Assessoria Tecnica Ltda. Av Paulista, 1439-Cj. 72 Cerqueira Cesar CEP 01311-200, Sao Paulo, SP, CEP:01311-200, Brazil	Tel : +55-11-3146-2200 Fax: +55-11-3146-2217	China	Mitsubishi Electric Automaiton (China) Ltd. No.1386 Hongqiao Road, Mitsubishi Electric Automation Center Shanghai China	Tel : +86-21-2322-3030 Fax: +86-21-2322-3000
Germany	Mitsubishi Electric Europe B.V. German Branch Gothaer Strasse 8 D-40880 Ratingen, Germany	Tel : +49-2102-486-0 Fax: +49-2102-486-1120	Taiwan	Setsuyo Enterprise Co., Ltd. 6F., No.105, Wugong 3rd, Wugu Dist, New Taipei City 24889, Taiwan, R.O.C.	Tel : +886-2-2299-2499 Fax: +886-2-2299-2509
UK	Mitsubishi Electric Europe B.V. UK Branch Travellers Lane, Hatfield, Hertfordshire., AL10 8XB, UK	Tel : +44-1707-276100 Fax: +44-1707-278695	Korea	Mitsubishi Electric Automation Korea Co., Ltd. 1480-6, Gayang-dong, Gangseo-ku Seoul 157-200, Korea	Tel : +82-2-3660-9530 Fax: +82-2-3664-8372
Italy	Mitsubishi Electric Europe B.V. Italian Branch Viale Colleoni 7-20041 Agrate Brianza (Milano), Italy	Tel : +39-039-60531 Fax: +39-039-6053312	Singapore	Mitsubishi Electric Asia Pte, Ltd. 307 Alexandra Road #05-01/02, Mitsubishi Electric Bulding Singapore 159943	Tel : +65-6470-2480 Fax: +65-6476-7439
Spain	Mitsubishi Electric Europe B.V. Spanish Branch Carretera de Rubi 76-80 E-08190 Sant Cugat del Valles (Barcelona), Spain	Tel : +34-93-565-3131 Fax: +34-93-589-2948	Thailand	Mitsubishi Electric Automation (Thailand) Co., Ltd. Bang-Chan Industrial Estate No.111 Soi Serithai 54, T.Kannayao, A.Kannayao, Bangkok 10230 Thailand	Tel : +66-2-906-3238 Fax: +66-2-906-3239
France	Mitsubishi Electric Europe B.V. French Branch 25.Boulevard des Bouvets, F-92741 Nanterre Cedex, France	Tel : +33-1-5568-5568 Fax: +33-1-5568-5757	Indonesia	P.T. Autoteknindo Sumber Makmur Muara Karang Selatan Block A/Utara No.1 Kav. No.11 Kawasan Industri/Pergudangan Jakarta-Utara 14440, P.O Box5045 Jakarta 11050, Indonesia	Tel : +62-21-663-0833 Fax: +62-21-663-0832
Czech Republic	Mitsubishi Electric Europe B.V.-o.s.-Czech office Avenir Business Park, Radlická 714/113a CZ-158 00 Praha 5	Tel : +420-251-551-470 Fax: +420-251-551-471	India	Mitsubishi Electric India Pvt. Ltd. 2nd Floor, DLF Building No.9B, DLF Cyber City Phase III, Gurgaon 122002, Haryana, India	Tel : +91-124-4630300 Fax: +91-124-4630399
Poland	Mitsubishi Electric Europe B.V. Polish Branch ul. Krakowska 50 32-083 Balice, Poland	Tel : +48-12-630-47-00 Fax: +48-12-630-47-01	Australia	Mitsubishi Electric Australia Pty.Ltd. 348 Victoria Road, Rydalmere, N.S.W 2116, Australia	Tel : +61-2-9684-7777 Fax: +61-2-9684-7245
Russia	Mitsubishi Electric Europe B.V. Russian Branch St.Petersburg office Sverdlovskaya emb., bld "Sch", BC "Benua", office 720; 195027, St.Petersburg, Russia	Tel : +7-812-633-3497 Fax: +7-812-633-3499			

MITSUBISHI ELECTRIC CORPORATION

HEAD OFFICE: TOKYO BUILDING, 2-7-3, MARUNOUCHI, CHIYODA-KU, TOKYO 100-8310, JAPAN
NAGOYA WORKS: 1-14, YADA-MINAMI 5, HIGASHI-KU, NAGOYA, JAPAN

1205 (MDOC)

Specifications subject to change without notice.
Printed in Japan on recycled paper.